
PARK HYATT MALDIVES™

HADAHAA

Blue Journeys Dive Sites Information



Gemanafushi Out

Location: South East of Hadahaa, Out Side of Gemanafushi

GPS Coordinates: N0 27.275 / E73 34.272

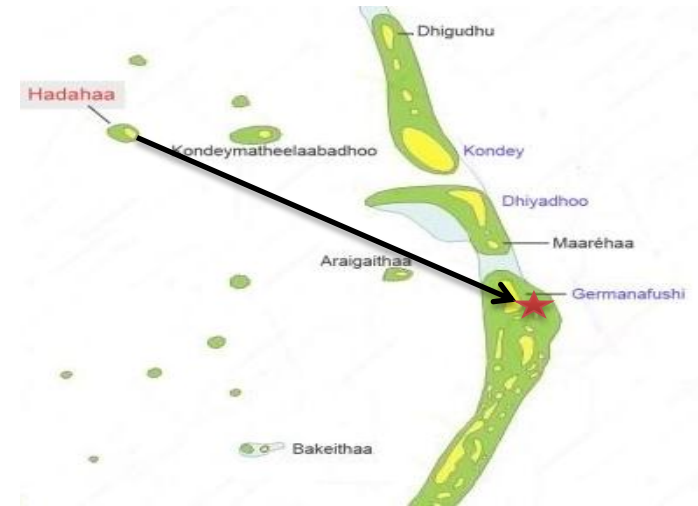
Description: Top reef start from 3 – 5 meters with outer reef edge of a wide channel. The edge drops of 30 meters down to +40. There are some small over hangs around 8- 10 meters out side of the reef with a amazing reef structure.

Coral life: Colonies of excellent hard corals

Fish and other animals life: Commonly sighted are White tip reef sharks, Turtles both hawksbill and green, Eagle rays, Napoleon wrasse, Big eye trevally, Barracudas, and school of fusiliers, and depending on the current some season Grey Reef Sharks.

Dive Technique: Depending on the current there are some possible ways to dive here. Incoming current descend in “Big Blue” staying stationary at channel edge and drift into channel or descent in out side the reef having reef on the left hand shoulder and drift into channel. Outgoing current best possible way is to jump inside the channel having reef on the right hand shoulder and drift to the edge and continue on the right side of the reef

Experience level: Mostly experience divers/ beginners can dive depending how strong the current is.



Dhaandhoo Kandu (Dhaandhoo Out)

Location: North of Hadahaa

GPS Coordinates: N0 38.050 / E73 27.317

Description: A channel wide 200, length 600 meters with outside reef edge at 30 meters depth inside channel varies between 15 to 25 meters. Drop off at outer channel edge slope at inner edge and flat bottom. Outside reef starting from 19 meters there are few over hangs which have the possibilities to swim through and to explore for more marine life.

Coral life: Good

Fish and other animals life: Commonly sighted are White tip reef sharks, Turtles both hawksbill and green, Eagle rays, Napoleon wrasse, Big eye trevally, Barracudas, and school of fusiliers, and depending on the current Grey Reef Sharks. Nurse shark is also possible to visible from out side reef around 10 – 11 meters from the small the over hang

Dive Technique: Crossing channel, combination staying stationary at channel edge drift in to channel or drift along channel side depending on current

Experience level: Mostly experience divers/ beginners can dive depending how strong the current is.



Maareha Thila

Location: South East of Hadahaa, Infront of Maareha Island

GPS Coordinates:

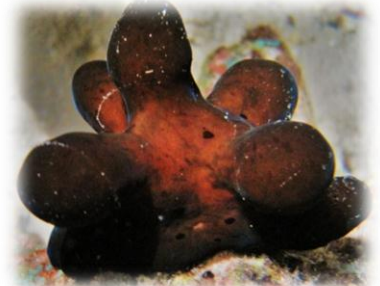
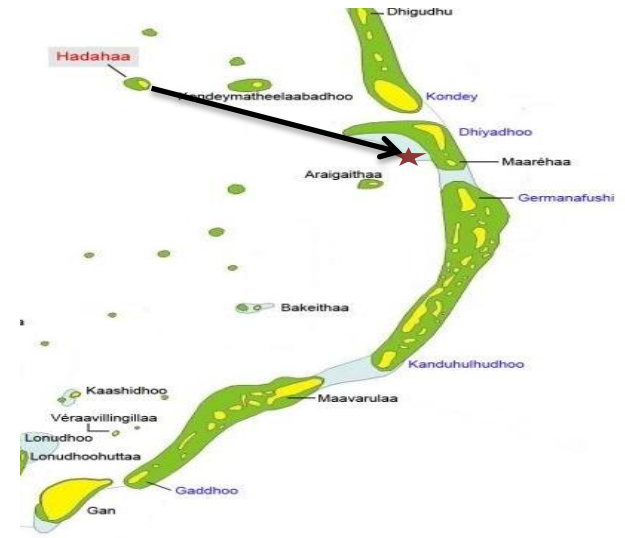
Description: A shallow thila, top reef start from 5- 7 meters, around 30 to 40 meter round in diameter, sides slowly sloping down to 30+ meter

Coral life: Excellent

Fish and other animals life: One side of the reef around 11 – 13 meters is full of Anemone fish (Clown fish), school of fusiliers, glass fish, bait fish always around, Turtles and White Tip reef sharks are visible some time

Dive Technique: No current slow relaxing dives

Experience level: Any Level



Dhorogalla (Coral City)

Location: North of Hadahaa

GPS Coordinates: N0 36.48 / E73 26.23

Description: Exceptional abundance and variety of hard coral. Live coral coverage exceeding 100%. Beautiful formation of pinnacles and canyons. Considered by many to be the best coral garden in the Maldives.

Coral life: Excellent

Fish and other animals life: Napoleon wrasse, ghost pipe fish, school of fusiliers and feather tail stingrays are often sighted.

Dive Technique: Best way to dive is to start from the thila, explore the coral life and look out for small animals. For the end of the dive move up to sandy part and swim to the east will be the best way end a beautiful dive

Experience level: Any level



Hulaa Thila

Location: South of Hadahaa

GPS Coordinates:

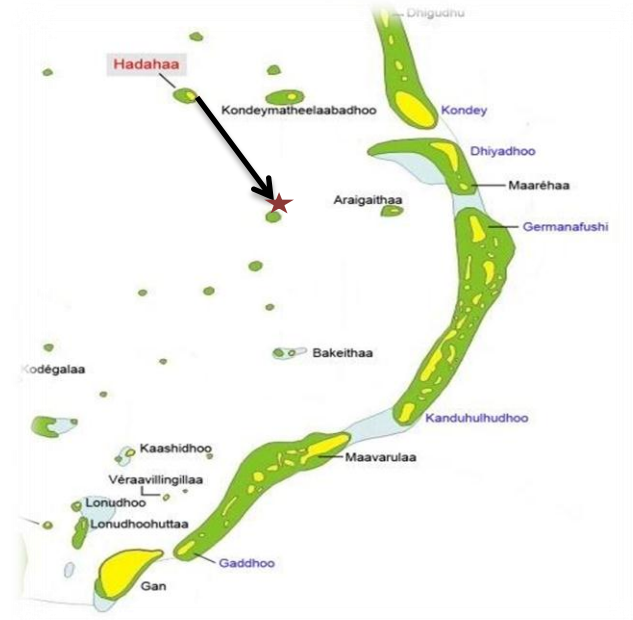
Description: A very small an shallow thila top reef starts from 4 – 6 meters slowly slope down to +30 meters, around 30 meters diameter with some big corals lying in the bottom of thila

Coral life: Excellent

Fish and other animals life: Mostly small fishes and school of glass fish, fusiliers, bait fish and variety of other fishes.

Dive Technique: No special technique or special entry point for this dive site, special for slow and relaxing dives

Experience level: Any level



Keulhu Faru

Location:

GPS Coordinates:

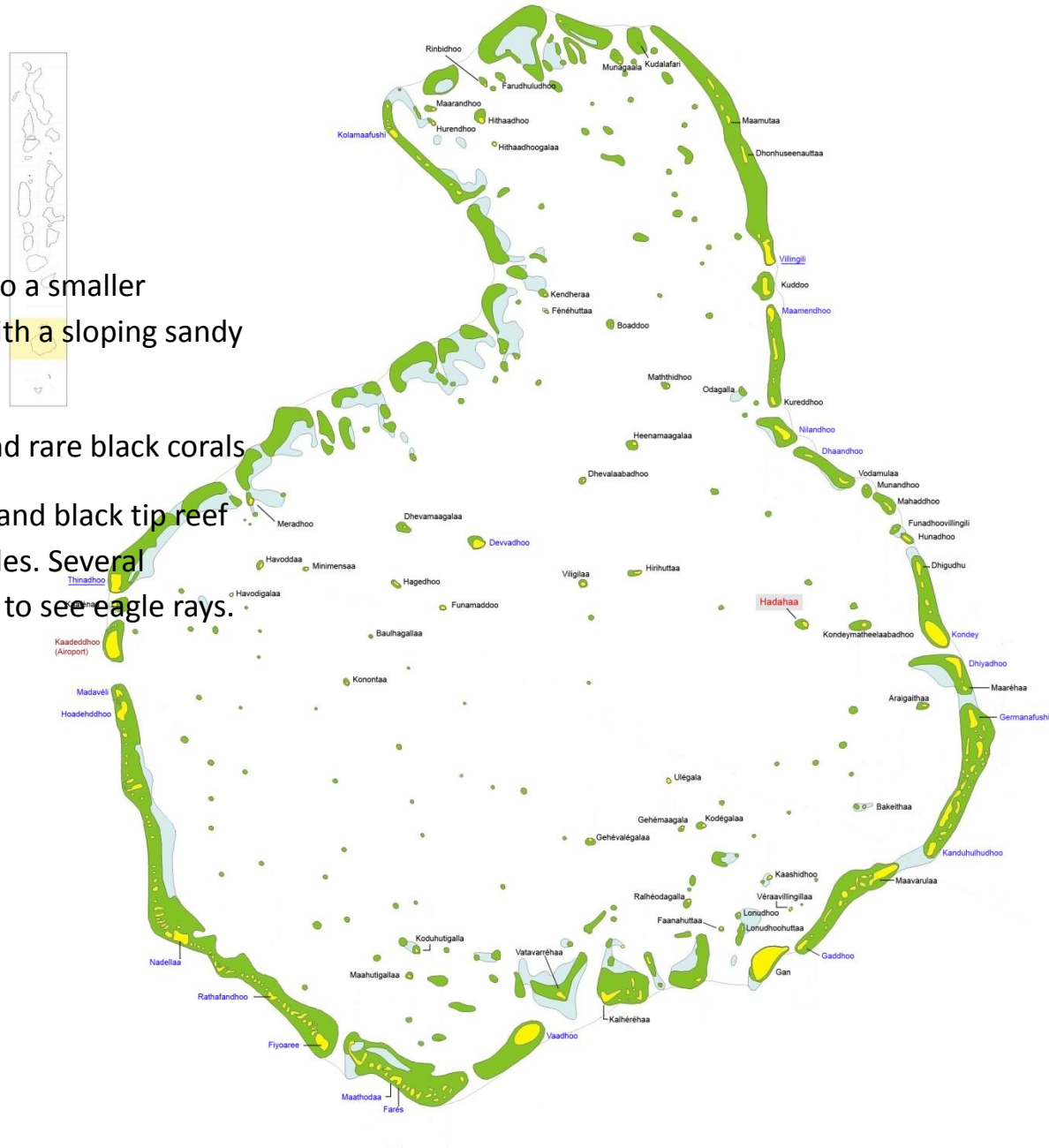
Description: One large pinnacle connected to a smaller pinnacle. Depths range from 2 m - >30 m, with a sloping sandy patch from 7 m – 30 m.

Coral life: Good, many hard coral species and rare black corals

Fish and other animals life: Many white tip and black tip reef sharks. Critically Endangered Hawksbill turtles. Several different species of nudibranch. Possibilities to see eagle rays.

Dive Technique:

Experience level: Any level



Five Brothers

Location: North of Hadahaa

GPS Coordinates:

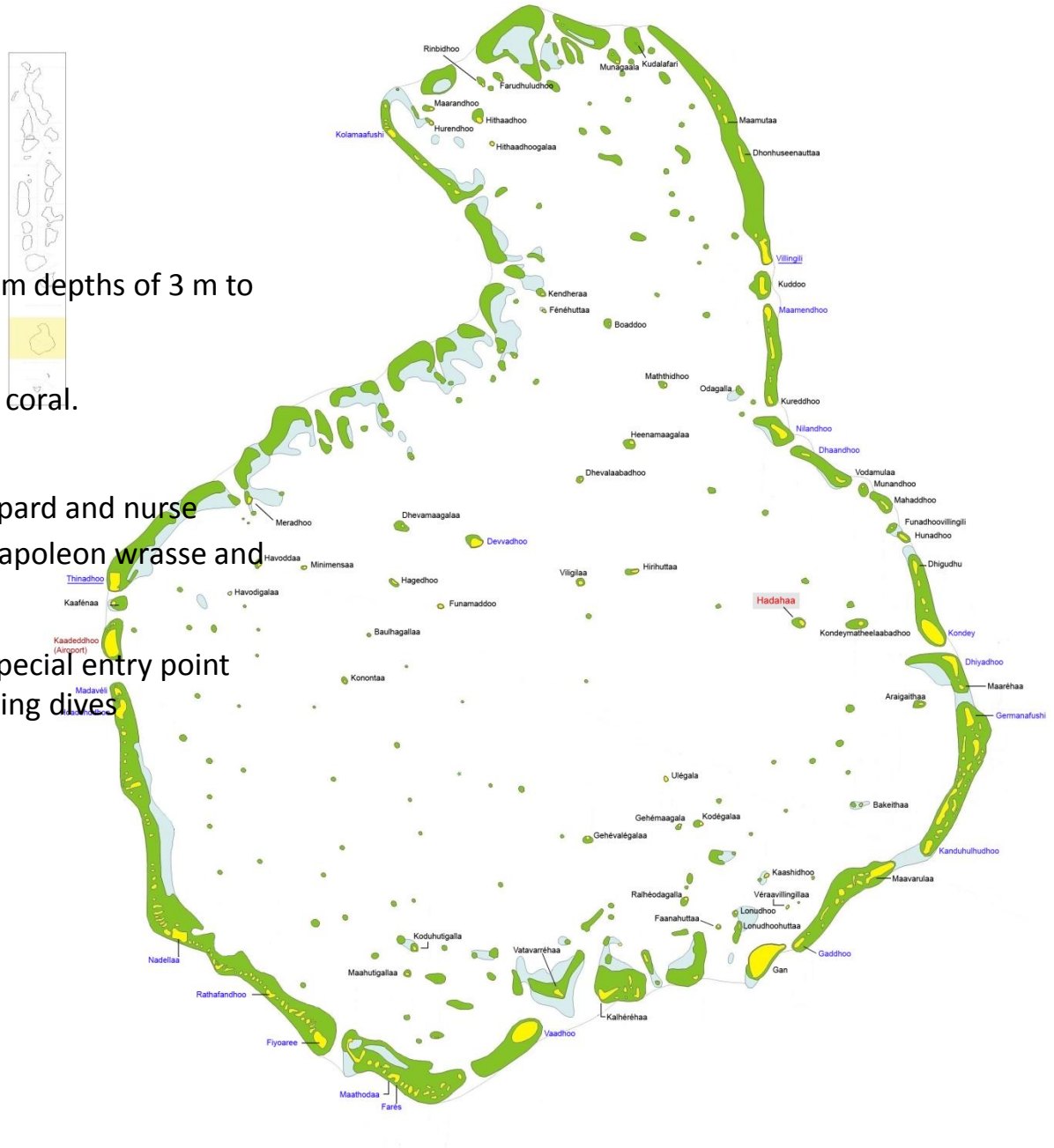
Description: Five submerged pinnacles from depths of 3 m to 25 m. Sandy bottom

Coral life: Excellent, many species of hard coral.

Fish and other animals life: Sting rays, leopard and nurse sharks, rare endangered species such as Napoleon wrasse and Hawksbill turtles

Dive Technique: No special technique or special entry point for this dive site, special for slow and relaxing dives

Experience level: Any level



Park Thilla

Location: South of Hadahaa

GPS Coordinates:

Description: Fully submerged reef. Top of the thilla is at 1 m descending to >30 m. Strong currents are possible on the east side.

Coral life: Excellent

Fish and other animals life: Big schools of fish, an abundance of macro invertebrates including flatworms and shrimp. Silver tip sharks are occasionally spotted here.

Dive Technique: Dive technique is dependant on the current, if a strong current the dive will move with the current. If no current the dive

Experience level: Advanced recommended



Nilandhoo out

Location: North Of Hadahaa

GPS Coordinates:

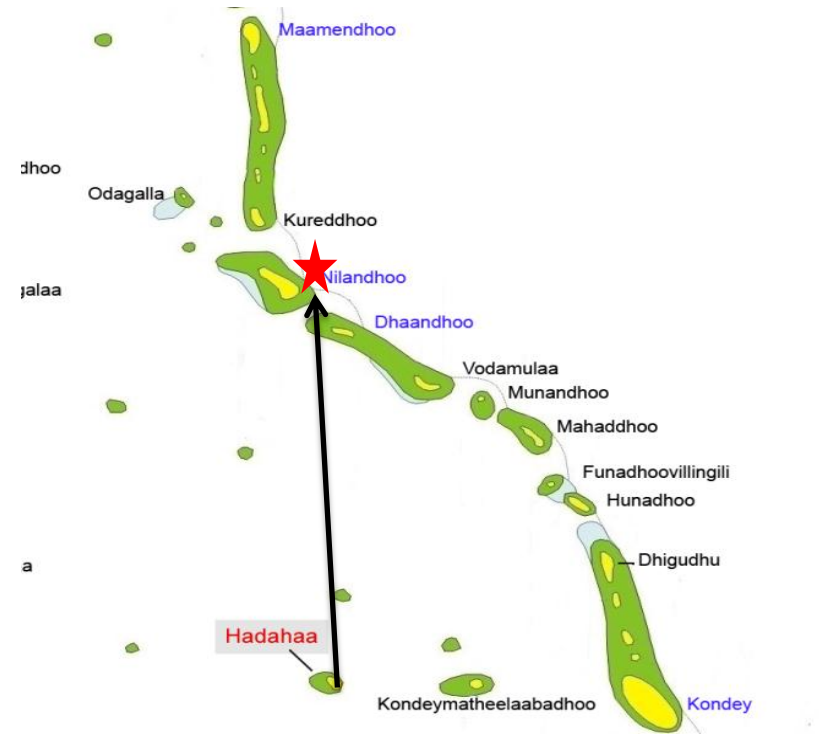
Description: A wall on the outside the atoll descending vertically from 5 m – 1500 m+

Coral life: Excellent

Fish and other animals life: Large schools of fish, lots of hawksbill and green turtles, big Napoleon wrasse, Grey reef, White Tip and black Tip reef sharks, Pelagic fishes

Dive Technique: Due to strong ocean current the dive always performed as drift dive.

Experience level: Any level



Dhiyadhoo Thilla

Location: East Of Hadahaa

GPS Coordinates:

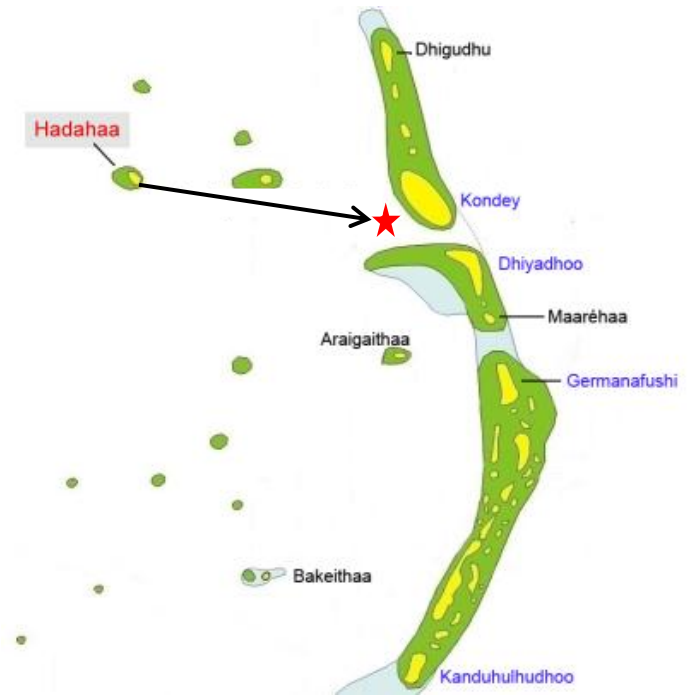
Description: A submerged reef start from 5 m – 30 m+.

Coral life: Excellent, 70% of the dive site is covered with soft corals (*Alcyonidae*), and a large area full of lettuce corals.

Fish and other animals life: Large schools of fish, lots of hawksbill and green turtles, big Napoleon wrasse, White Tip and black Tip reef sharks, Dog tooth tunas, a family of eagle rays, Nurse shark, Moray eels, occasionally dolphins are spotted.

Dive Technique: Dive site is situated in the middle of a channel there for there is strong current and the most areas of the site is located in greater depths.

Experience level: Advance and Nitrox Divers only



Marehaa Kandu

Location: South East Of Hadahaa

GPS Coordinates:

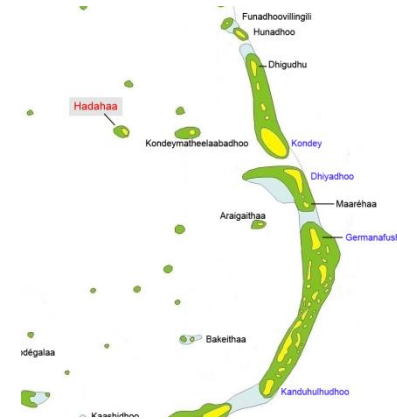
Description: A Channel between the islands of the edge of the outer atoll. Strong current up to 5-6 knots.

Coral life: Good

Fish and other animals life: Possibilities to see up to 200 Grey Reef sharks, Large schools of fish, lots of hawksbill and green turtles, big Napoleon wrasse, White Tip and black Tip reef sharks, Dog tooth tunas, Eagle rays, Moray eels, occasionally Hammer Head sharks and Sail fish are spotted.

Dive Technique: Depending on current. Incoming current: jump outside the atoll and drift with the current inside the atoll. Outgoing current: Jump inside the atoll and drift with the current outside the atoll. During light to medium current its possible to cross the channel and see Hundreds of sharks.

Experience level: Advance and Nitrox Divers recommended



Inah Thilla

Location: South West Of Hadahaa

GPS Coordinates:

Description: A very old submerged reef starting from 8-30 m+, over hangs and a swim through.

Coral life: Good, soft corals and sea fans, lots of black corals, colour changing corals and massive boulder corals.

Fish and other animals life: A nursery for juvenile reef fish, schools of glass fish, Large schools of jack, Snappers, Rainbow Runners, Skip jack Tuna, Surgeon Fish and Fusiliers. White Tip and black Tip reef sharks, Dog tooth tunas, Eagle rays, Moray eels, One resident hawksbill turtle, lots of nudibranch, white scorpion fish, juvenile grey reef and lots of an anemones on top reef.

Dive Technique: No special technique.

Experience level: Any level



Konday Kandu

Location: South East Of Hadahaa

GPS Coordinates:

Description: A Channel between the islands of the edge of the outer atoll. Strong current up to 5-6 knots.

Coral life: Excellent, soft corals and sea fans, lots of black corals and massive boulder corals.

Fish and other animals life: Large schools of jack, Snappers, Rainbow Runners, Skip jack Tuna, Surgeon Fish and Fusiliers, White Tip and black Tip, Grey reef and leopard sharks, Dog tooth tunas, Big Napoleon, Eagle rays, Moray eels, Many hawksbill and green turtles.

Dive Technique: Depending on current. Incoming current: jump outside the atoll and drift with the current inside the atoll. Outgoing current: Jump inside the atoll and drift with the current outside the atoll. During light to medium current its possible to cross the channel and see lots of sharks.

Experience level: Any level, Advance and nitrox recommended.



Kurehdhoo Kandu

Location: North Of Hadahaa

GPS Coordinates:

Description: A Channel between the islands of the edge of the outer atoll. Strong current up to 5-6 knots.

Coral life: Excellent, lots of colourful soft corals, sea fans, lots of black corals, massive boulder corals and beautiful coral topography.

Fish and other animals life: Large schools of jack, Snappers, Rainbow Runners, Skip jack Tuna, Surgeon Fish and Fusiliers White Tip and black Tip, Grey reef and leopard sharks, Dog tooth tunas, Big Napoleon, Eagle rays, Moray eels, Many hawksbill, green turtles and occasionally Marlins are spotted.

Dive Technique: Depending on current. Incoming current: jump outside the atoll and drift with the current inside the atoll. Outgoing current: Jump inside the atoll and drift with the current outside the atoll. During light to medium current its possible to cross the channel and see lots of sharks.

Experience level: Any level, Advance and nitrox recommended.

